

Installation Instructions

FRONT BUMPER REPLACEMENT PART # 7343855

2017 FORD SUPERDUTY F-250 & F-350 4x2/4x4

Do not attempt to install this product on any vehicle other than the one listed above!

Parts List

ITEM	Qty.	Part #	Description	Torque
1	10		1/2 x 2" Hex Bolt	65 Ft. Lbs.
2	8		1/2 x 1 1/2" Hex Bolt	65 Ft. Lbs.
3	22		1/2" Flat Washer	
4	4		1/2" Lock Washer	
5	4		1/2" Hex Nut	65 Ft. Lbs.
6	14		1/2" Flange Nut	65 Ft. Lbs.
7	1		Replacement Bumper Assembly	
8	1		Driver Side Frame Bracket	
9	1		Passenger Side Frame Bracket	
10	1		Driver Side Auxiliary Bracket	
11	1		Passenger Side Auxiliary Bracket	



Tool Required:

3/4" & 18mm, 15mm, 13mm Socket
 3/4" & 18mm, 15mm, 13mm Wrench
 Ratchet & Ratchet Extension

Approximate installation time: 60 min

Read the installation instructions completely and verify that all of the parts listed are accounted for. If you have defective, missing or damaged parts please contact Frank Supply Co. at: 1 (800) 392-4513 or email: sales@franksupplyco.com. For installation assistance, please call 1 (888) 427-4466.

It is the customer's responsibility to protect the finish with a regular application of a nonabrasive polish compatible with the products finish.

FACTORY BUMPER REMOVAL

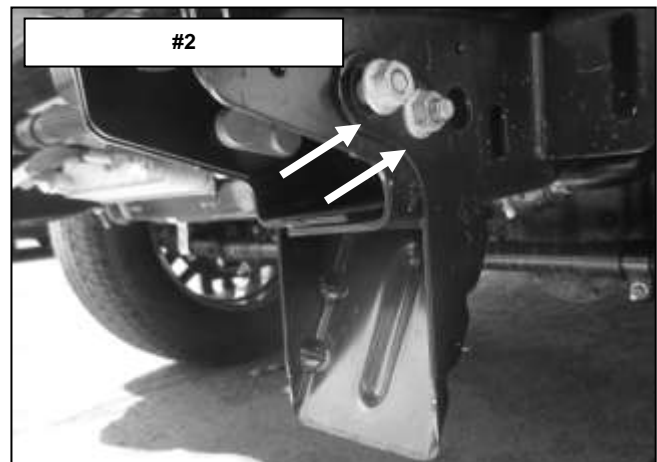
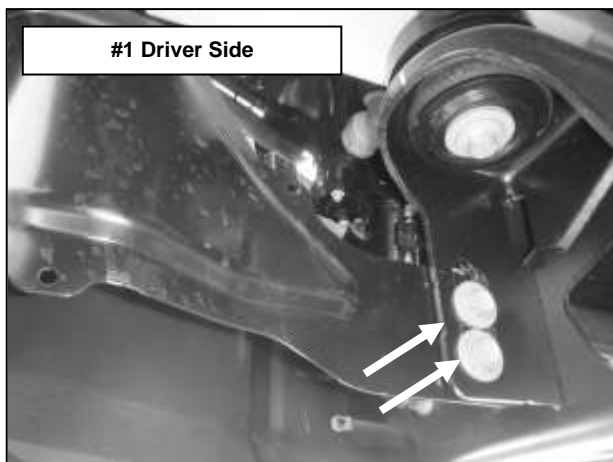
Step-1 Remove the bolts (2) per side securing the bumper bracket to the side of the frame using a 13mm socket and ratchet. **Picture # 1.**

Under-ride Guards

Remove the nuts and bolt plates securing the guards to the frame. **Picture #2**

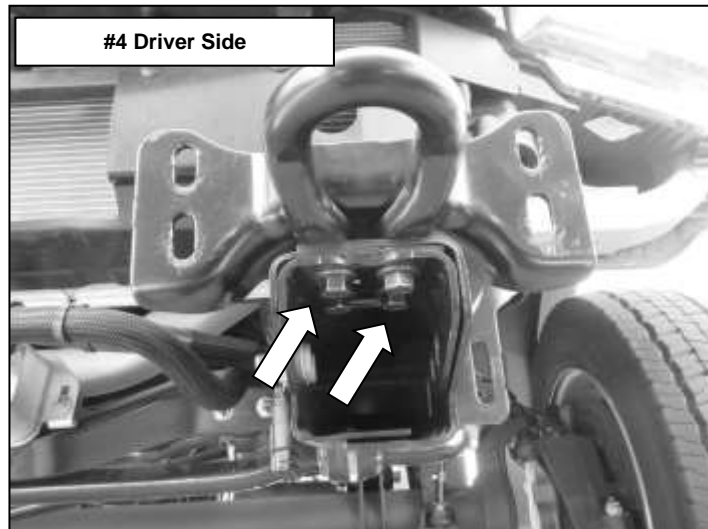
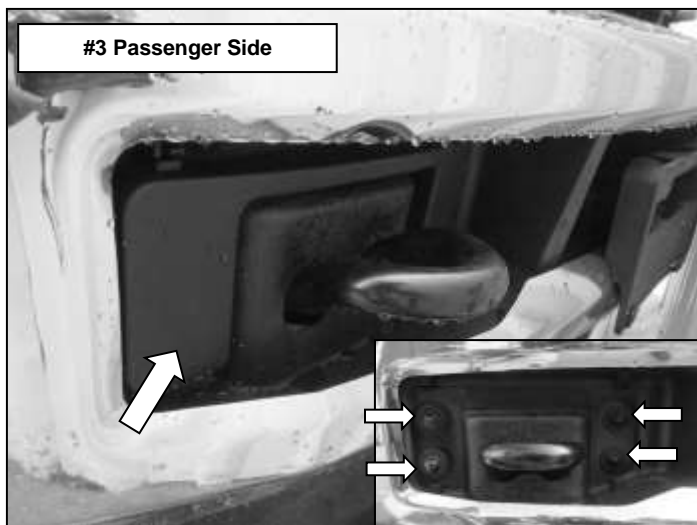
Fog Lights.

Disconnect the fog lights and remove the plastic fasteners securing the wiring harness to the bumper.



Step-2 Remove the plastic cap to expose the bolts (4) per side securing the front of the bumper to the bumper brackets using an 18mm socket and ratchet. **Picture #3.** Remove the bumper from the vehicle and set it aside.

Step-4 Remove the bolts (4) per side securing the tow hooks and bumper brackets to the frame using a 15mm socket and ratchet **Picture #4.** Do not discard the bolts.

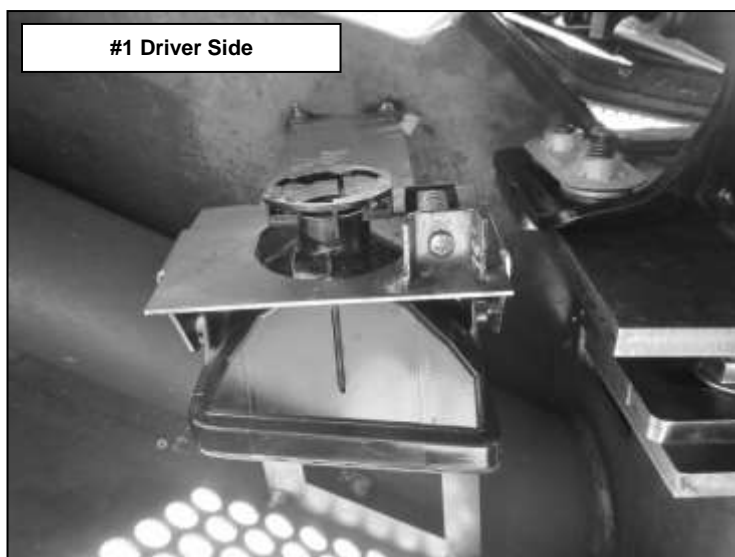


REPLACEMENT BUMPER INSTALLATION

Step-1 If equipped, remove the fog light to the factory bumper. Remove the adjusting screw and unclip the fog lights from the brackets.

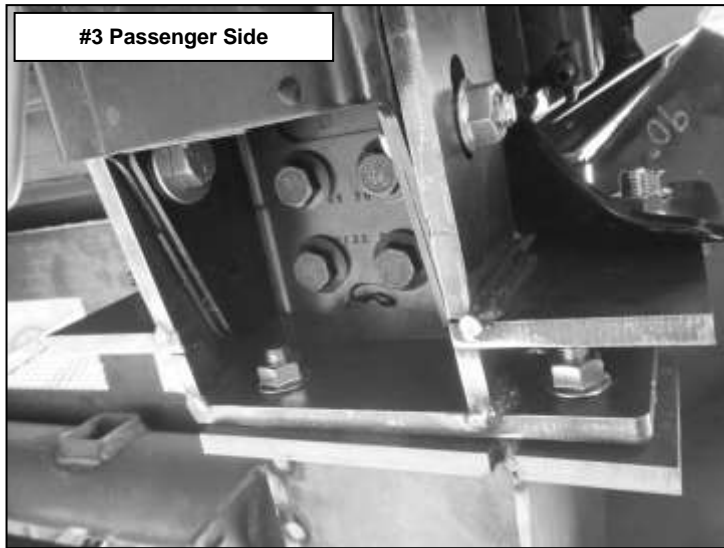
Step-2 Attach the fog lights to the brackets located on the back side of the replacement bumper using the adjusting screw and the spring. **Picture #1.**

Step-3 Install the driver's side frame bracket by positioning the bracket on top of the frame, place the tow hook and bumper bracket on the bracket, align the holes and secure the bracket using (4) factory bolts removed, side of the bracket to secure with (2) ½" x 2" hex bolts, (4) ½" flat washers, (2) ½" lock washers and (2) ½" hex nuts. **Picture #2.** Leave the bolts loose for final adjustment. Repeat the step to install the passenger side bracket.



Step-4 With assistance, lift the replacement bumper up to the frame brackets and secure the bumper to each bracket using at bottom (2) ½" x 1 ½" hex bolts, (2) ½" flat washers and (2) ½" flange nuts, using at outer side (2) ½" x 2" hex bolts, (2) ½" flat washers and (2) ½" flange nuts, using at bottom of inner side (1) ½" x 1 ½" hex bolts, (1) ½" flat washers and (1) ½" flange nuts . **Picture #3.** Leave the bolts loose for final adjustment.

Step-5 Install the auxiliary bracket by positioning the bracket on the outside of the bumper plate and bumper bracket. Align the holes and secure to the bracket using (1) ½" x 2" hex bolts, (1) ½" flat washer and (1) ½" flange nut, attach to the plate using (1) ½" x 1 1/2" hex bolts, (1) ½" flat washer and (1) ½" flange nut. **Picture #4.**



Step-6 Align the bumper with the vehicle and tighten all nuts and bolts.

If equipped, re-connect the fog lights.

Remember to check and retighten the nuts and bolts periodically.

