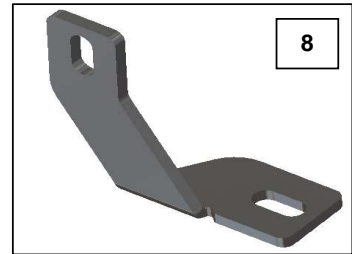
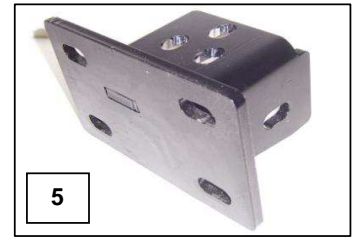


INSTALLATION INSTRUCTIONS
FRONT BUMPER REPLACEMENT PART # 7334055
2011-2013 FORD F-450 & F-550 SUPER DUTY 4x2/4x4
Do not attempt to install this product on any vehicle other than the one listed above!

PARTS LIST

ITEM	QTY.	PART #	DESCRIPTION	TORQUE
1	16	-	1/2" x 1 1/2" Hex Bolt	65 Ft. Lbs.
2	6	-	M12 x 40mm Hex Bolt	65 Ft. Lbs.
3	22	-	1/2" Flat Washer	-
4	16	-	1/2" Flange Nut	65 Ft. Lbs.
5	6	-	M12 Flange Nut	65 Ft. Lbs.
6	1	-	Replacement Bumper Assembly	-
7	1	-	Driver Side Frame Bracket	-
8	1	-	Passenger Side Frame Bracket	-
9	2	-	Upper Auxiliary Bracket	-
10	1	-	Driver Side Lower Auxiliary Bracket	-
11	1	-	Passenger Side Lower Auxiliary Bracket	-



TOOL REQUIRED:

13mm, 15mm, 18mm & 3/4" Sockets.
 3/4" Wrench.
 Phillips & Slotted Blade Screw Driver.
 Ratchet & Ratchet Extension.

Approximate installation time: 60 min.

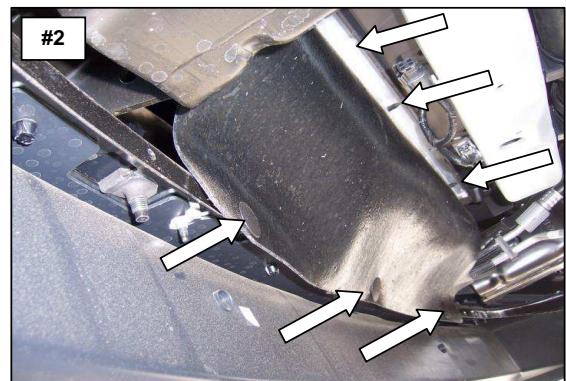
Read the installation instructions completely and verify that all of the parts listed are accounted for. If you have defective, missing or damaged parts please contact Frank Supply Co. at: 1 (800) 392-4513 or email: sales@franksupplyco.com. For installation assistance, please call 1 (888) 427-4466

It is the customer's responsibility to protect the finish with a regular application of a nonabrasive polish compatible with the products finish.

FACTORY BUMPER REMOVAL.

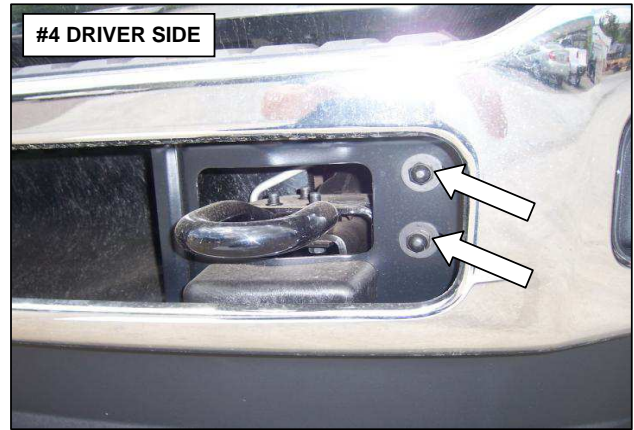
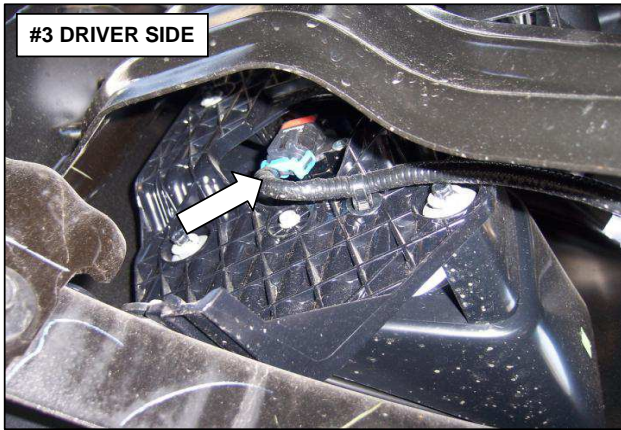
Step-1 Remove the bolts (2) per side securing the bumper bracket to the side of the frame using a 13mm socket and ratchet. **Picture # 1.**

Step-2 Remove the plastic fasteners and rubber air deflector from the bumper and bottom of the vehicle. **Picture # 2.**



Step-3 If equipped, unplug the fog lights and remove the plastic fasteners securing the wiring harness to the bumper. **Picture #3.** If your vehicle is also equipped with an engine block heater, remove the plastic fastener securing the power cord to the bumper.

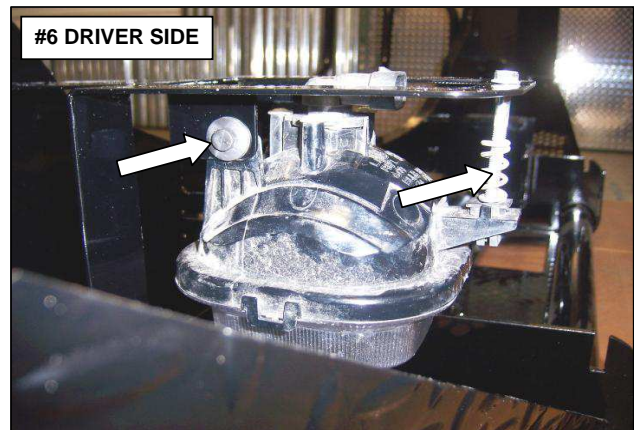
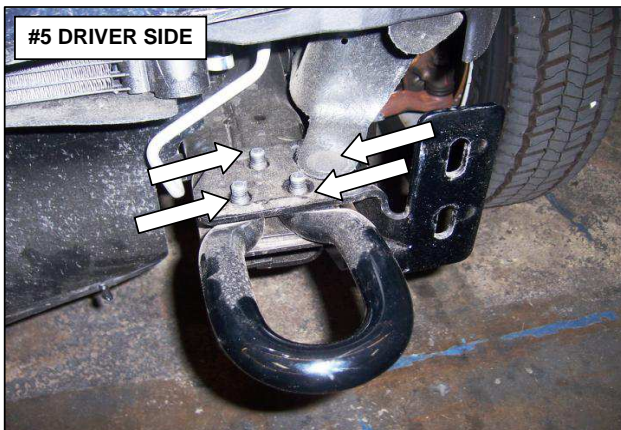
Step-4 Remove the bolts (2) per side securing the front of the bumper to the frame brackets using an 18mm socket and ratchet. **Picture #4.** Remove the bumper from the vehicle and set it aside.



Step-5 Remove the plastic fastener securing the splash shield to the frame bracket, and the bolts (3) per side securing the tow hooks and brackets to the frame using a 15mm socket and ratchet **Picture #5** Do not discard the bolts.

Step-6 If equipped, remove the nuts securing the fog light and bracket assemblies to the factory bumper. Remove the adjusting screws and plastic retaining pins securing the fog lights to the brackets. **Discard the brackets.**

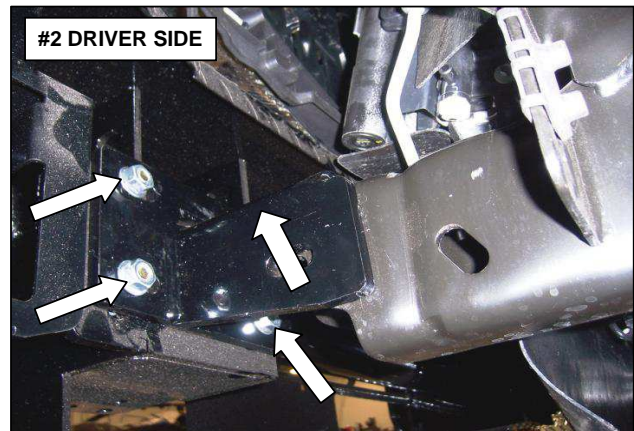
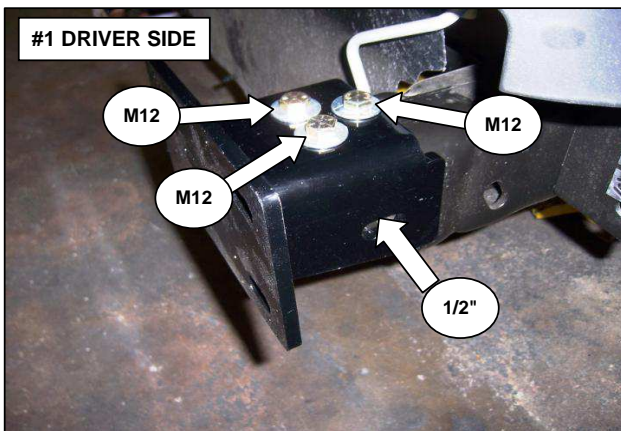
Step-7 Install the fog lights to the brackets located on the backside of the replacement bumper using the plastic retaining pins and adjusting screws **Picture #6.**



REPLACEMENT BUMPER INSTALLATION.

Step-1 Install the driver's side frame bracket by positioning the bracket on top of the frame, align the holes and secure the bracket using (3) M12 x 40mm hex bolts, (3) 1/2" flat washers and (3) M12 flange nuts, side of the bracket to secure with (1) 1/2" x 1 1/2" hex bolts, (1) 1/2" flat washers and (1) 1/2" flange nuts. **Picture #1.** Leave the bolts loose for final adjustment. Repeat the step to install the passenger side bracket.

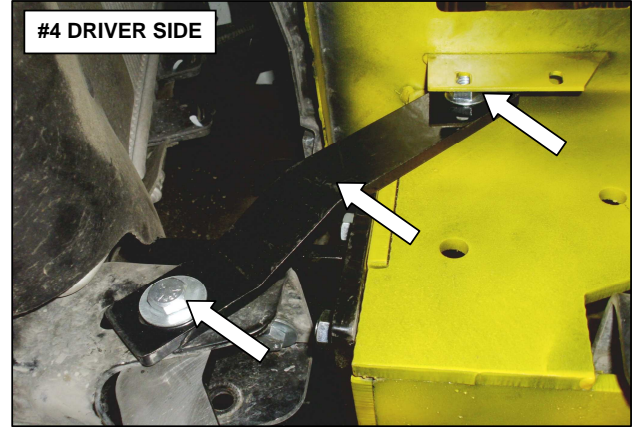
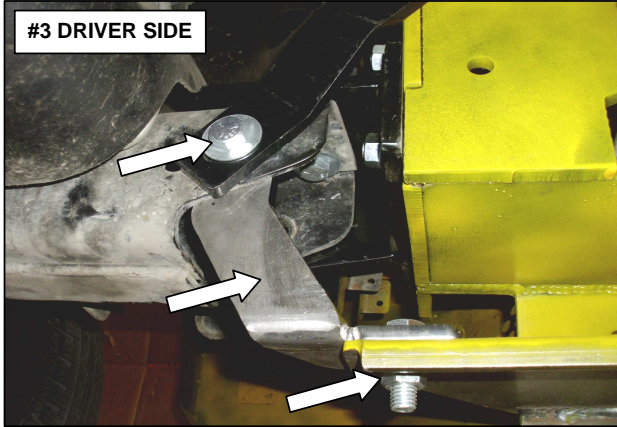
Step-2 With assistance, lift the replacement bumper up to the frame brackets and secure the bumper to each bracket using (4) 1/2" x 1 1/2" hex bolts, (4) 1/2" flat washers and (4) 1/2" flange nuts. **Picture #2.** Leave the bolts loose for final adjustment.



Step-3 Install the driver's side lower auxiliary bracket by positioning the bracket inside the frame then align and insert the (1) ½" x 1 ½" hex bolt, (1) ½" flat washer. Secure the bumper bracket using (1) ½" x 1 ½" hex bolt, (1) ½" flat washer (1) ½" flange nut. **Picture #3.** Leave the flange nut loose for final adjustment.

Step-4 Install the upper auxiliary bracket by positioning the bracket over the threads of the ½" x 1 ½" hex bolt and installing (1) ½" flange nut. Secure the opposite end of the bracket to the hole in the bumper bracket using (1) ½" x 1 ½" hex bolt, (1) ½" flat washer and (1) ½" flange nut. **Picture #4.** Leave the nuts and bolts loose for final adjustment.

Step-5 Repeat steps three and four to install the passenger side auxiliary brackets.



Step-6 Install the tow hooks to the bumper using the factory tow hook bolts, then align the bumper with the vehicle and tighten all nuts and bolts. **Picture #5 & #6**

If equipped, re-connect the fog lights.

Remember to check and retighten the nuts and bolts periodically.



FRONT BUMPER REPLACEMENT INSTALLED.



TOW HOOK INSTALLED.