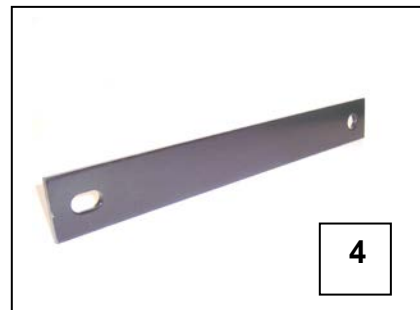
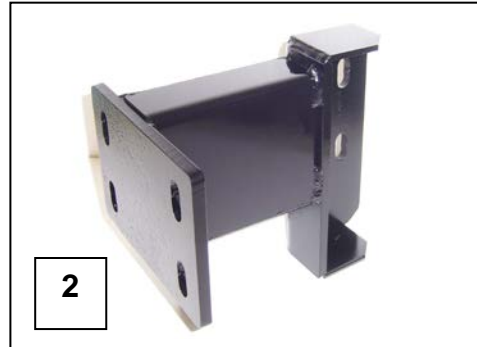


Installation Instructions
Front Bumper Replacement Part # 7332155
2010-2012 Dodge Ram HD 4500, 5500 4x2/4x4
Do not attempt to install this product on any vehicle other than the one listed above!

Parts List

| Item | Qty. | Description | Torque |
|------|------|-----------------------------------|--------------|
| 1 | 1 | Replacement Bumper Assembly | |
| 2 | 1 | Driver Side Frame Bracket | |
| 3 | 1 | Passenger Side Frame Bracket | |
| 4 | 2 | Auxiliary Bracket | |
| 5 | 2 | 10-16 x 3/4" Self Drilling Screws | |
| 6 | 8 | 1/2" x 1 1/2" Hex Bolt | 65 Ft. Lbs. |
| 7 | 8 | 1/2" Flat Washer | |
| 8 | 8 | 1/2" Flange Nut | 65 Ft. Lbs. |
| 9 | 2 | 5/8" x 4" Hex Bolt | 135 Ft. Lbs. |
| 10 | 2 | 5/8" Flange Nut | 135 Ft. Lbs. |
| | | | |
| | | | |
| | | | |
| | | | |
| | | | |
| | | | |
| | | | |



Tool Required:

- 10mm, 13mm, 18mm, 24mm & 3/4" Sockets
- 18mm & 3/4" Wrench
- Slotted Blade & Phillips Head Screw Driver
- Ratchet & Ratchet Extension

Approximate installation time: 60 min

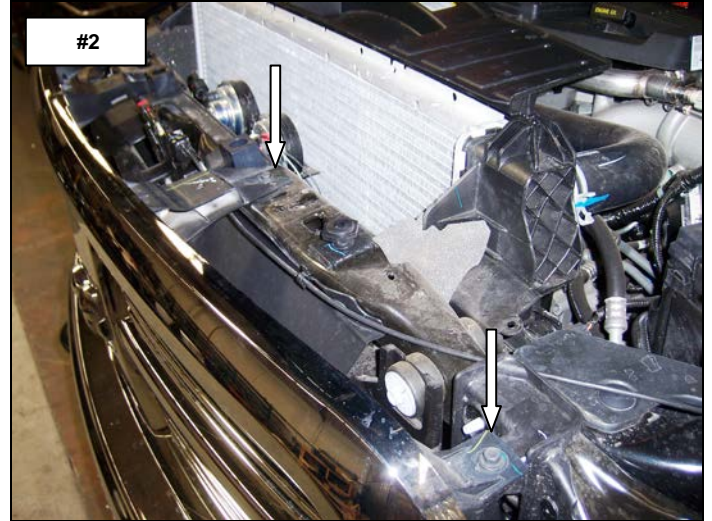
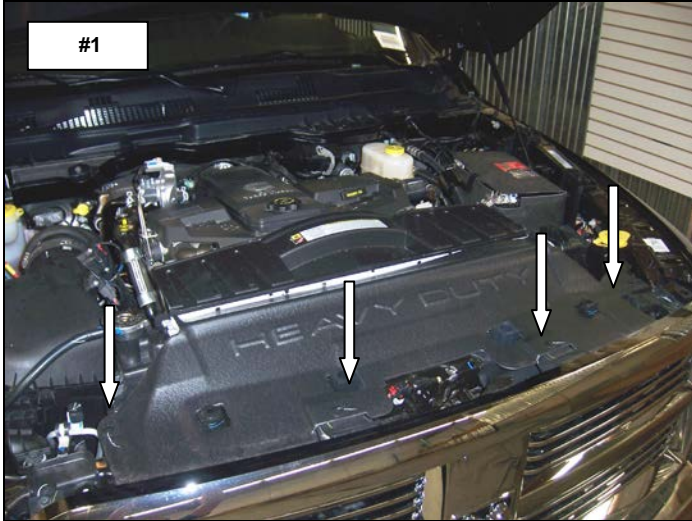
Read the installation instructions completely and verify that all of the parts listed are accounted for. If you have defective, missing or damaged parts please contact Frank Supply Co. at: 1 (800) 392-4513 or email: sales@franksupplyco.com. For installation assistance, please call 1 (888) 427-4466

It is the customer's responsibility to protect the finish with a regular application of a nonabrasive polish compatible with the products finish.

Front Bumper Removal

Step-1 Open the hood and remove the (4) plastic push in connectors securing the radiator dust cover to the radiator support using the tip of a screw driver. **Picture #1** Remove the dust cover from the vehicle.

Step-2 Remove the (4) screws securing the top of the grille to the radiator support using a 10mm socket and ratchet. **Picture #2** Slightly rotate the top of the grille forward, then gently pull straight out on the lower section to unsnap the (2) lower clips. Remove the grille from the vehicle.



If the vehicle has these options or equipment:

Diesel Engine

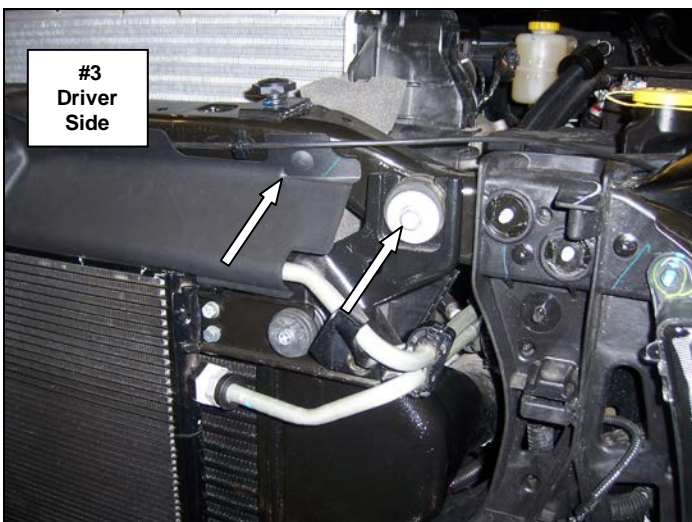
Remove the (2) plastic push in connectors securing the radiator shield to the radiator support using the tip of a screw driver and the bolts (1) per side securing the top of the intercooler to the radiator support using a 13mm socket and ratchet. **Picture #3**

Fog Lights

Disconnect the fog light wiring harness on the driver side of the factory bumper. **Picture #4**

Engine Block Heater

Remove the fasteners securing the power cord to the passenger side of the factory bumper. **Not Shown**

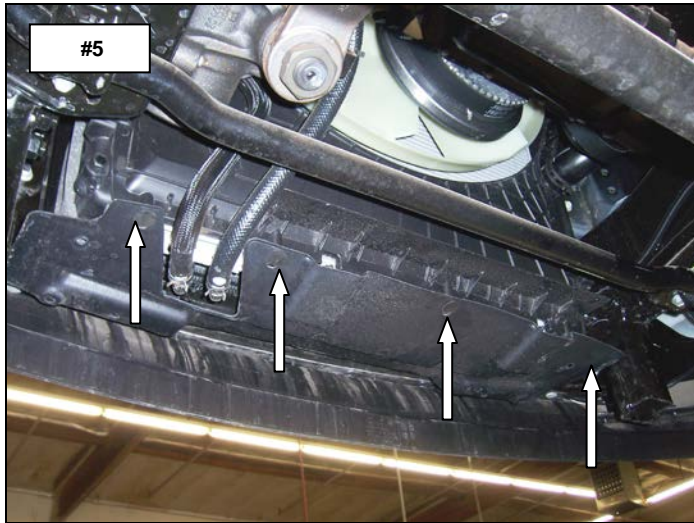


Step-3 Remove the (4) plastic push in connectors securing the splash shield to the bottom of the radiator using the tip of a screw driver. Leave the splash shield attached to the factory bumper. **Picture #5**

Step-4 Remove the nuts and bolts (2) per side securing the tow hooks to the frame using a 24mm socket and ratchet. Retain the nuts and bolts to attach the tow hooks to the replacement bumper. **Picture #6**

Step-5 Remove the nuts (2) per side and paired bolts securing the bumper brackets to the frame using a 18mm socket and ratchet. **Picture #6**

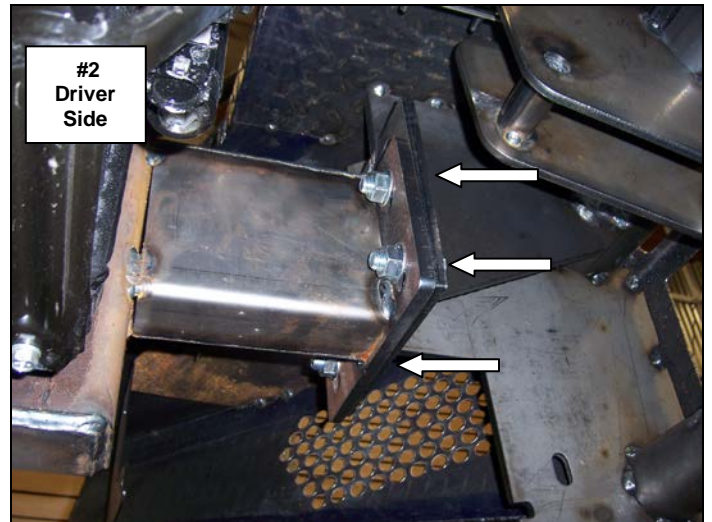
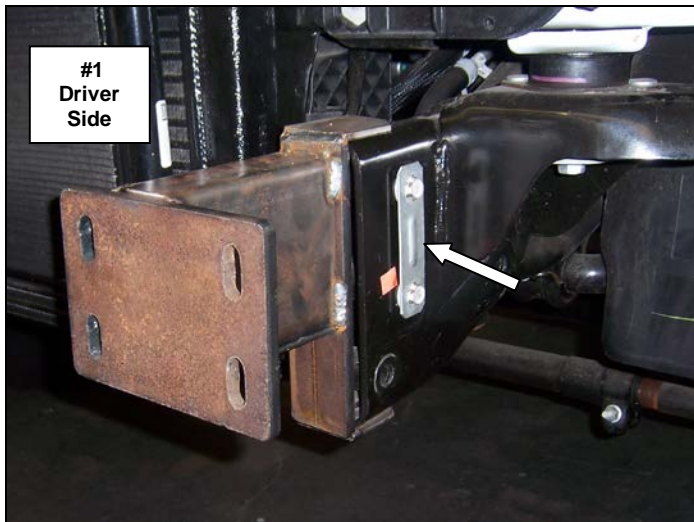
With assistance, remove the bumper from the vehicle and set it aside. Retain the nuts and paired bolts to attach the replacement bumper brackets. **Note:** Diesel engine models will require slightly lifting the intercooler and move it to one side at a time to remove the paired bolts.



Replacement Bumper Installation

Step-1 Install the driver's side frame bracket by positioning the bracket over the frame, align the holes and secure the bracket using the factory paired bolts and nuts. **Picture #1**
Repeat this step to install the passenger side frame bracket.

Step-2 With assistance, lift the replacement bumper up to the frame brackets and secure the bumper to each bracket using (4) ½" x 1 1/2" hex bolts, (4) ½" flat washers and (4) ½" flange nuts. **Picture #2**
Leave the nuts and bolts loose for final adjustment.



Step-3 Install one of the auxiliary brackets on the driver side by positioning the bracket on the frame, align the holes and secure the bracket using (1) 5/8" x 4" hex bolt and (1) 5/8" flange nut. Secure the opposite end of the auxiliary bracket to the hole in the replacement bumper using (1) ½" x 1 ½" hex bolt, (1) ½" flat washer and (1) ½" flange nut. **Picture #3**
Leave the nuts and bolt loose for final adjustment. Repeat this step to install the remaining auxiliary bracket on the passenger side.

Step-4 Re-install the intercooler, radiator shield, grille and radiator dust cover using the factory fasteners.

If equipment with Fog lights:

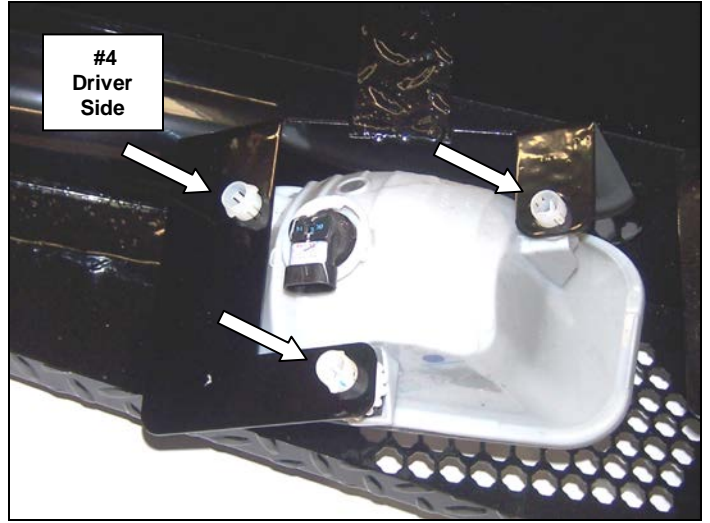
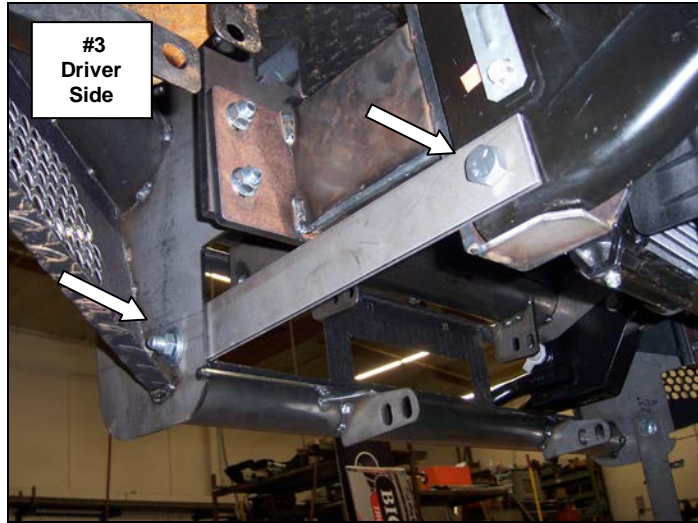
Remove the bolts securing the fog lights and brackets to the factory bumper. Remove the fog lights from the brackets and discard the brackets.

Install the fog lights to the brackets located on the back side of the replacement bumper using the factory retainers. **Picture #4**

Re-connect the fog light wiring.

Tow Hooks

Install the tow hooks to the replacement bumper using the factory nuts and bolts. **Picture #6**



Step-5 Align the replacement bumper with the vehicle and tighten all nuts and bolts. **Picture #5**

Remember to check and retighten the nuts and bolts periodically.

