

Installation Instructions
Front Bumper Replacement Part # 7323955
2008-2010 Ford F-250 & F-350 Super Duty 4x2/4x4

Do not attempt to install this product on any vehicle other than the one it is designed for and listed above!

Parts List

Item	Qty.	Part #	Description	Torque
1	2		7/16" x 2 1/4" Hex Bolt	45 Ft. Lbs.
2	4		7/16" Flat washer	
3	2		7/16" Lock Washer	
4	2		7/16" Hex Nut	45 Ft. Lbs.
5	14		1/2" x 1 1/2" Hex Bolt	65 Ft. Lbs.
6	14		1/2" Flat Washer	
7	14		1/2" Flange Nut	65 Ft. Lbs.
8	1		Replacement Bumper Assembly	
9	1		Driver Side Frame Bracket	
10	1		Passenger Side Frame Bracket	
11	1		Driver Side Auxiliary Bracket	
12	1		Passenger Side Auxiliary Bracket	



Tool Required:

- 8mm, 13mm, 15mm, 18mm, 5/8" & 3/4" Sockets
- 5/8", 11/16" & 3/4" Wrenches
- Phillips & Slotted Blade Screw Driver
- Ratchet & Ratchet Extension

Approximate installation time: 60 min

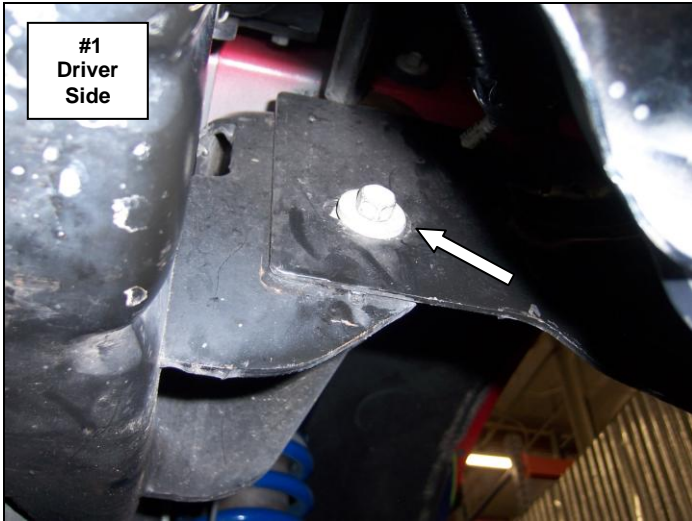
Read the installation instructions completely and verify that all of the parts listed are accounted for. If you have defective, missing or damaged parts please contact Frank Supply Co. at: 1 (800) 392-4513 or email: sales@franksupplyco.com. For installation assistance, please call 1 (888) 427-4466

It is the customer's responsibility to protect the finish with a regular application of a nonabrasive polish that is compatible with the products finish.

Factory Bumper Removal

Step-1 Remove the bolts (1) per side securing the bumper bracket to the side of the frame using a 13mm socket and ratchet. **Picture #1**

Step-2 Remove the plastic fasteners and rubber air deflector from the bumper and bottom of the vehicle. **Picture #2**



Note: If the vehicle has these options or equipment.

Under-ride Guards

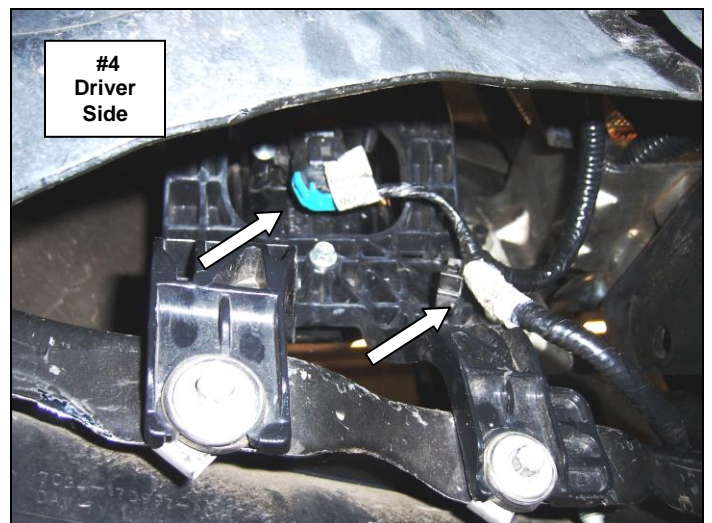
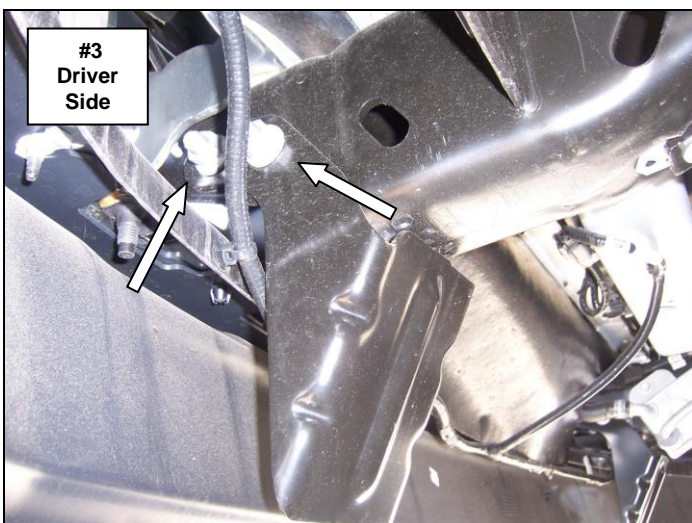
Remove the nuts and bolt plates securing the guards to the frame. **Picture #3**

Fog Lights

Disconnect the fog lights and remove the plastic fasteners securing the wiring harness to the bumper. **Picture #4**

Engine Block Heater

Remove the plastic fastener securing the power cord to the bumper. **Not Shown**



Step-3 Remove the bolts (2) per side securing the front of the bumper to the bumper brackets using an 18mm socket and ratchet. **Picture #5**

Remove the bumper from the vehicle and set it aside.

Step-4 Remove the bolts (3) per side securing the tow hook and bracket to the frame using a 15mm socket and ratchet. **Picture #6**

Do not discard the bolts

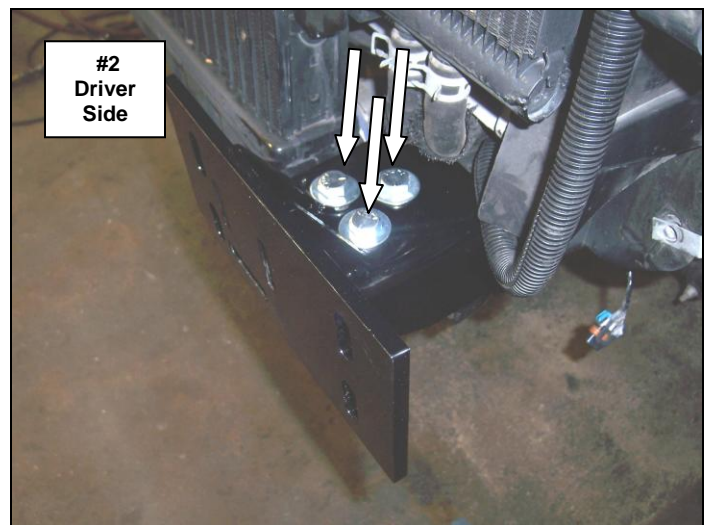
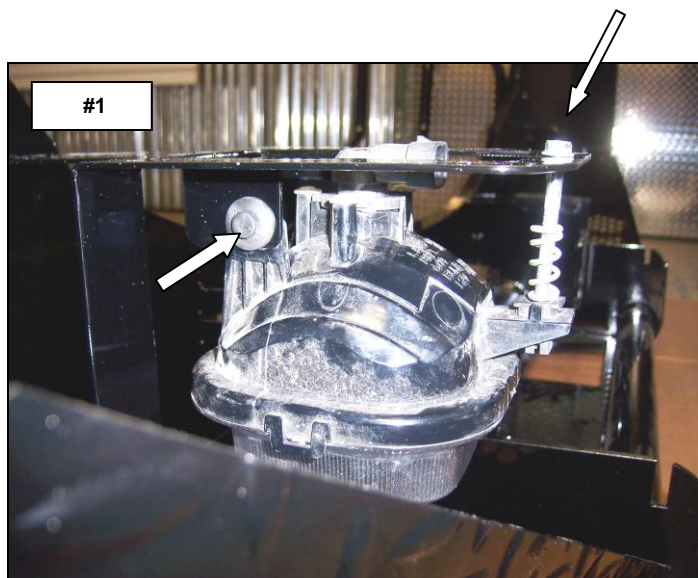


Replacement Bumper Installation

Step-1 If equipped, remove the screws securing the fog light and bracket assemblies to the factory bumper. Remove the adjusting screws and plastic retaining pins securing the fog lights to the brackets. Discard the brackets.

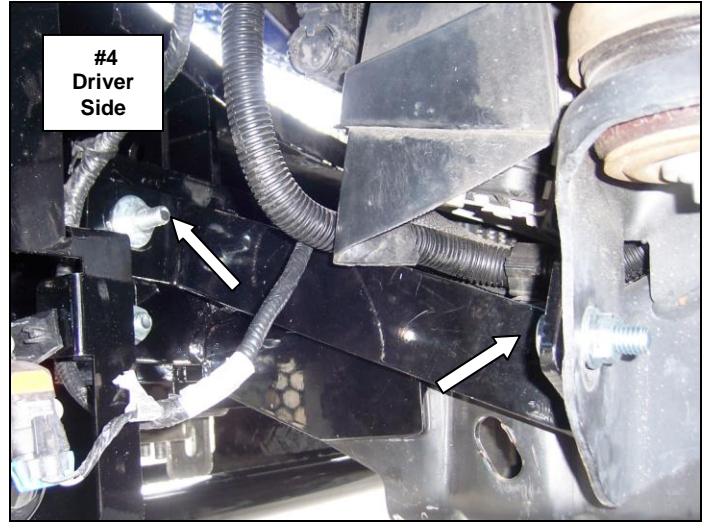
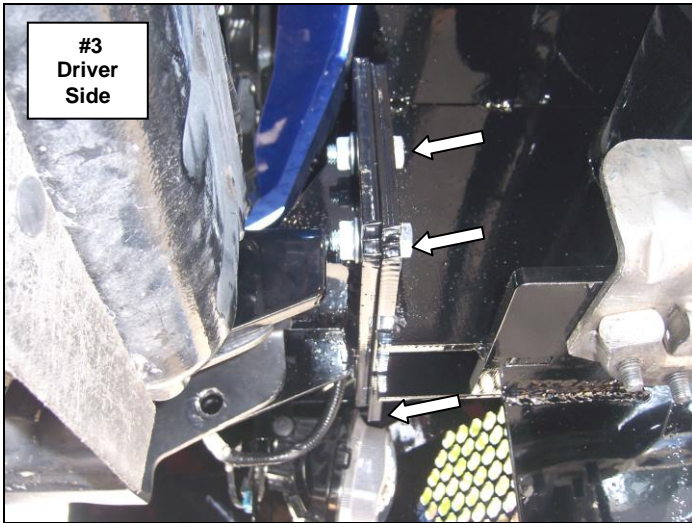
Step-2 Install the fog lights to the brackets located on the back side of the replacement bumper using the plastic retaining pins and adjusting screws. **Picture #1**

Step-3 Install the driver's side frame bracket by positioning the bracket on top of the frame, align the holes and secure the bracket using (3) 1/2" x 1 1/2" hex bolts, (3) 1/2" flat washers and (3) 1/2" flange nuts. **Picture #2**
Leave the bolts loose for final adjustment. Repeat this step to install the passenger side bracket.



Step-4 With assistance, lift the replacement bumper up to the frame brackets and secure the bumper to each bracket using (3) $\frac{1}{2}$ " x $1\frac{1}{2}$ " hex bolts, (3) $\frac{1}{2}$ " flat washers and (3) $\frac{1}{2}$ " flange nuts. **Picture #3**
Leave the bolts loose for final adjustment.

Step-5 Install the driver's side auxiliary bracket by positioning the bracket between the frame and frame bracket. Align the holes and secure the bracket to the frame using (1) $\frac{1}{2}$ " x $1\frac{1}{2}$ " hex bolt, (1) $\frac{1}{2}$ " flat washer and (1) $\frac{1}{2}$ " flange nut and to the top outer hole in the frame and bumper bracket using (1) $\frac{7}{16}$ " x $2\frac{1}{4}$ " hex bolt, (2) $\frac{7}{16}$ " flat washers, (1) $\frac{7}{16}$ " lock washer and (1) $\frac{7}{16}$ " hex nut. **Picture #4**
Leave the bolt loose for final adjustment. Repeat this step to install the passenger side bracket.



Step-6 install the tow hooks to the bumper using the factory tow hook bolts, then align the bumper with the vehicle and tighten all nuts and bolts. **Picture #5 & #6**

If equipped, re-connect the fog lights.

Remember to check and retighten the nuts and bolts periodically.

