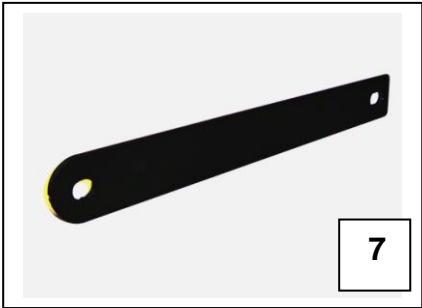


**Installation Instructions
Front Bumper Replacement Part # 7322455
2006-2009 Dodge Ram HD 2500, 3500 4x2/4x4**

Do not attempt to install this product on any vehicle other than the one listed above!

Parts List

Item	Qty.	Part #	Description	Torque
1	10		½" x 1 ½" Hex Bolt	65 Ft. Lbs.
2	10		½" Flat Washer	
3	10		½" Flange Nut	65 Ft. Lbs.
4	1		Replacement Bumper Assembly	
5	1		Driver Side Frame Bracket	
6	1		Passenger Side Frame Bracket	
7	2		Auxiliary Bracket	



Tool Required:
 10mm, 13mm, 18mm & 3/4" Sockets
 3/4" Wrench
 Slotted Blade Screw Driver
 Ratchet & Ratchet Extension

Approximate installation time: 60 min

Installation Notes

Read the installation instructions completely and verify that all of the parts listed are accounted for. If you have defective, missing or damaged parts please contact Frank Supply Co. at: 1 (800) 392-4513 or email: sales@franksupplyco.com. For installation assistance, please call 1 (888) 427-4466

It is the customer's responsibility to protect the finish with a regular application of a nonabrasive polish compatible with the products finish.

Front Bumper Removal

If the vehicle has these options or equipment:

Diesel Engine

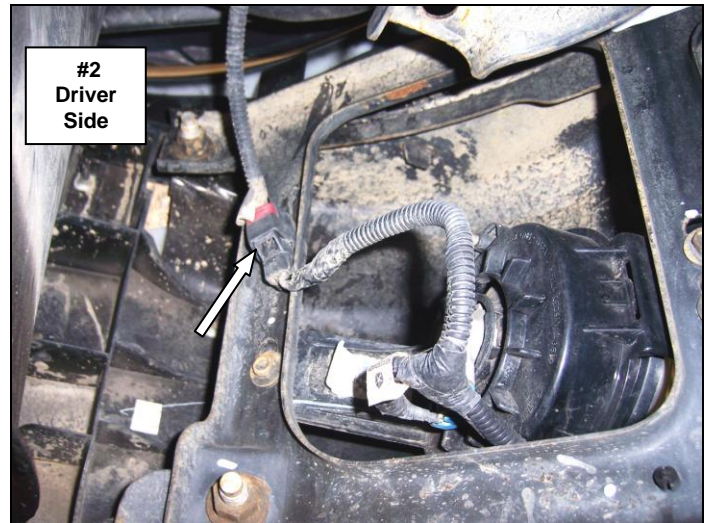
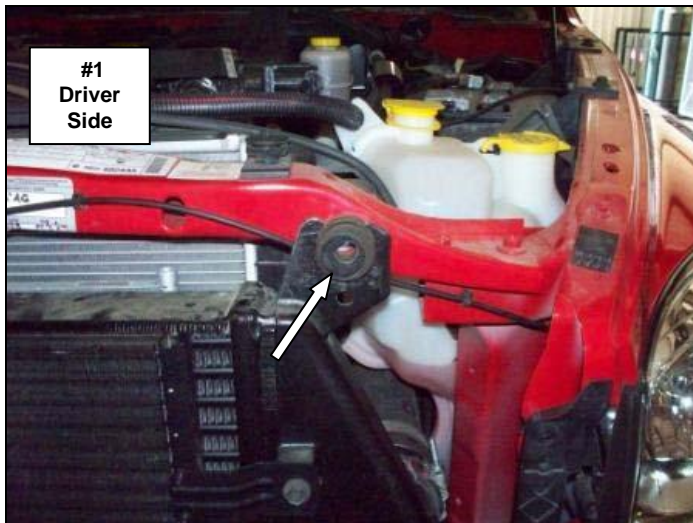
Open the hood and remove the bolts (1) per side securing the top of the intercooler to the radiator support using a 13mm socket and ratchet. **Picture #1**

Fog Lights

Disconnect the fog light wiring harness on the driver side of the factory bumper. **Picture #2**

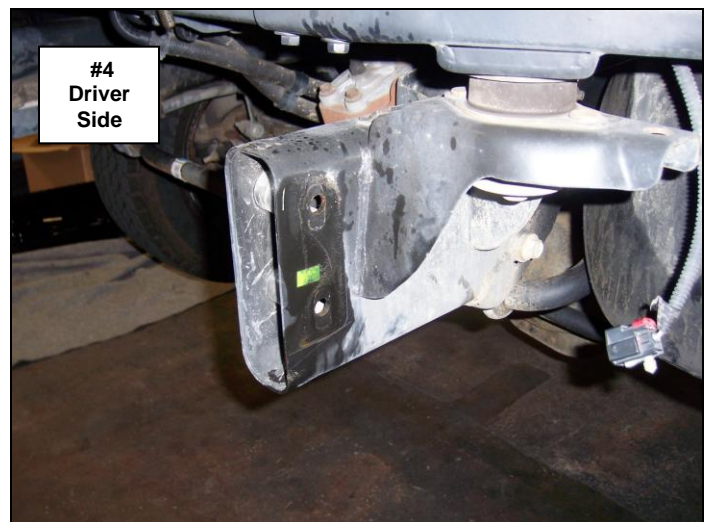
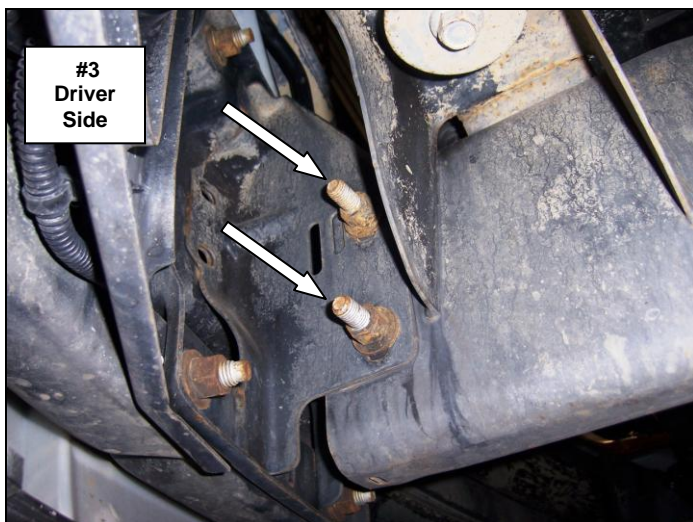
Engine Block Heater

Remove the fasteners securing the power cord to the passenger side of the factory bumper. **Not Shown**



Step-2 Remove the nuts (2) per side and paired bolts securing the bumper brackets to the frame using an 18mm socket and ratchet. **Picture #3** Remove the bumper from the vehicle and set it aside. Retain the nuts and paired bolts to attach the replacement bumper brackets.

Note: Diesel engine models will require slightly lifting the intercooler and move it to one side at a time to remove the paired bolts



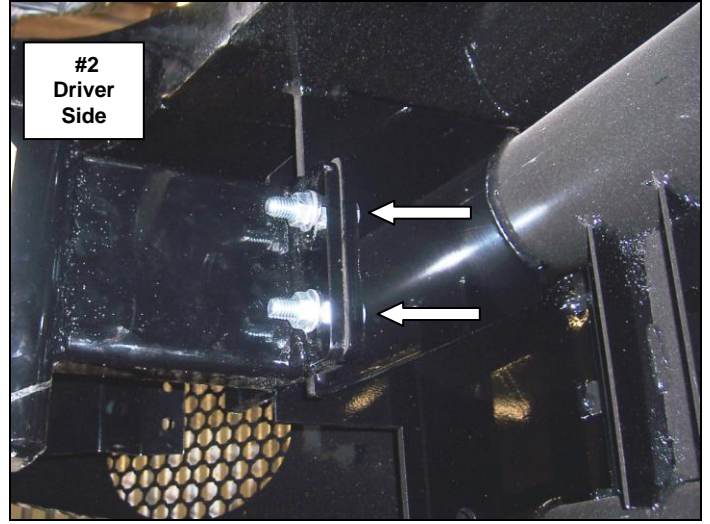
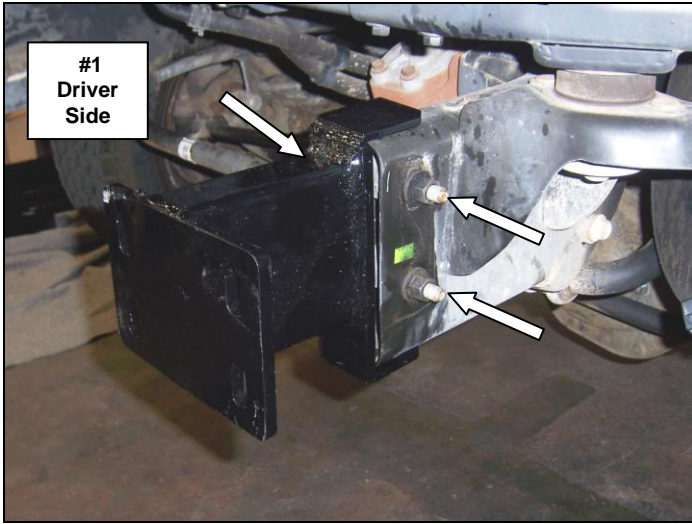
Replacement Bumper Installation

Step-1 Install the driver's side frame bracket by positioning the bracket over the frame, align the holes and secure the bracket using the factory paired bolts and nuts. **Picture #1** Leave the nuts loose for final adjustment. Repeat this step to install the passenger side frame bracket.

Note: Diesel engine models will require slightly lifting the intercooler and move it to one side at a time to install the paired bolts.

It may be necessary to slightly grind the weld on the top of the frame to allow clearance for the frame bracket.

Step-2 With assistance, lift the replacement bumper up to the frame brackets and secure the bumper to each bracket using (4) $\frac{1}{2}$ " x 1 $\frac{1}{2}$ " hex bolts, (4) $\frac{1}{2}$ " flat washers and (4) $\frac{1}{2}$ " flange nuts. **Picture #2** Leave the nuts and bolts loose for final adjustment.



Step-3 Install one of the auxiliary brackets on the driver side by removing the nut from the lower paired bolt, position the hole in the squared end of the bracket over the threads of the bolt and re-install the nut. Secure the opposite end of the auxiliary bracket to the hole in the bumper using (1) $\frac{1}{2}$ " x 1 $\frac{1}{2}$ " hex bolt, (1) $\frac{1}{2}$ " flat washer and (1) $\frac{1}{2}$ " flange nut. **Picture #3** Leave the nuts and bolt loose for final adjustment. Repeat this step to install the remaining auxiliary bracket on the passenger side.

If the vehicle has these options or equipment:

Diesel Engine

Re-install the intercooler.

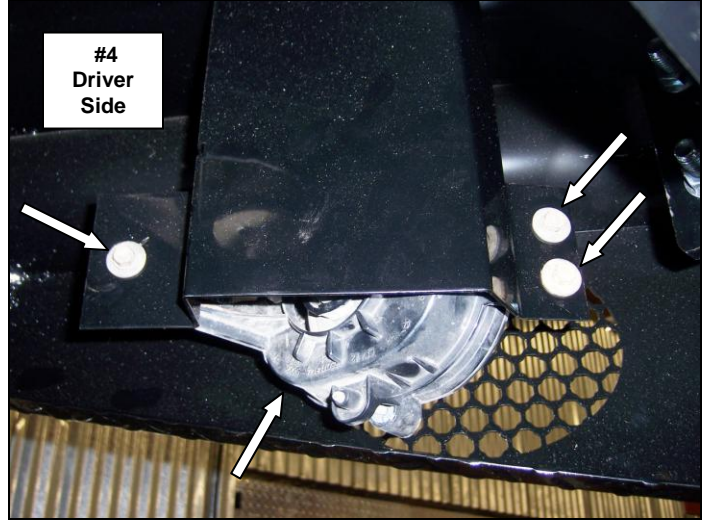
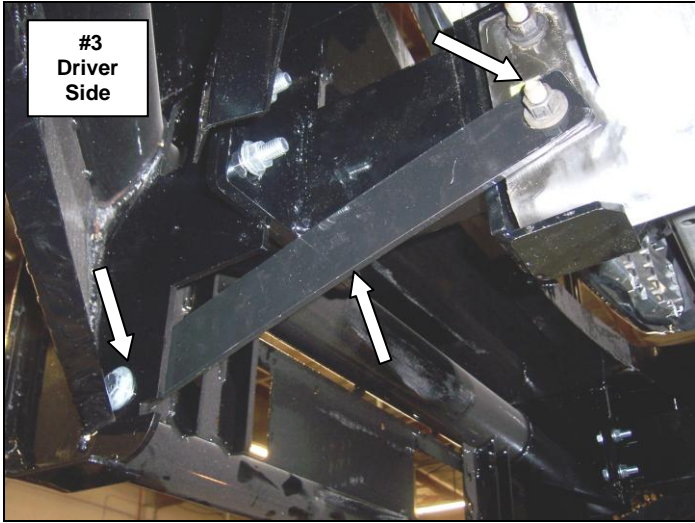
Fog lights

Remove the wiring harness, and bolts securing the fog lights and brackets to the factory bumper. Install the fog lights to the brackets located on the back side of the replacement bumper using the factory bolts.

Picture #4 Re-connect the wiring harness.

Tow Hooks

Remove the nuts, bolts and tow hooks from the factory bumper. Install the tow hooks to the replacement bumper using the factory nuts and bolts. **Picture #6**



Step-4 Align the replacement bumper with the vehicle and tighten all nuts and bolts. **Picture #5**
Remember to check and retighten the nuts and bolts periodically.

