

INSTALLATION INSTRUCTIONS:

1. Begin by trimming the plastic between the factory grille and bumper.
2. Remove the factory tow hooks to insert the bottom brackets.
- 2a. If tow hooks are not an option included on your model, cut out the plastic around the two locations where the tow hooks would be.
3. Remove the factory bumper bolts and begin installing the the bottom brackets.

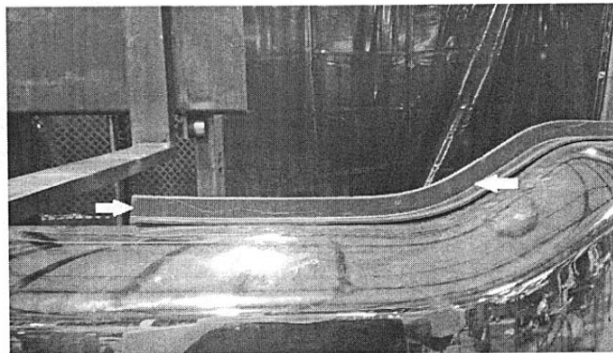
**Please note that additional trimming may be required around the corners of the two hook openings.*

4. Re-install the factory tow hooks.
5. Install top mounting brackets included in with the grille guard.
6. Install grille guard to bottom brackets using $1/2$ " carriage bolts.
8. Level the grille guard. It is recommended to use a level frist before completely tightening the carriage bolts.
9. Install top mounting tabs with $3/8$ " carriage bolts.

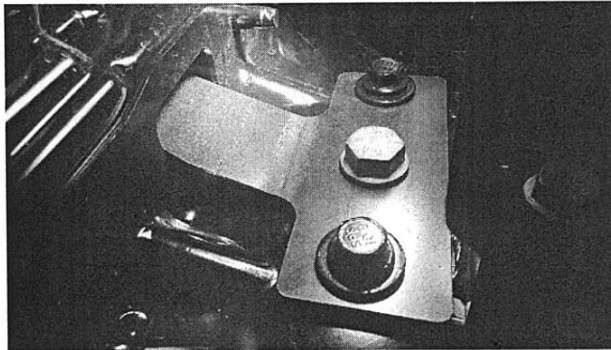
1232P

- 4 - $1/2$ " x $1 1/2$ " BOLTS GR5
- 4 - $1/2$ " x 2" BOLTS GR5
- 8 - $1/2$ " LOCKWASHERS
- 16 - $1/2$ " FLAT WASHERS
- 4 - $3/8$ " x 2" BOLTS GR5
- 4 - $3/8$ " NUTS
- 4 - $3/8$ " LOCKWASHERS
- 8 - $3/8$ " FLAT WASHERS

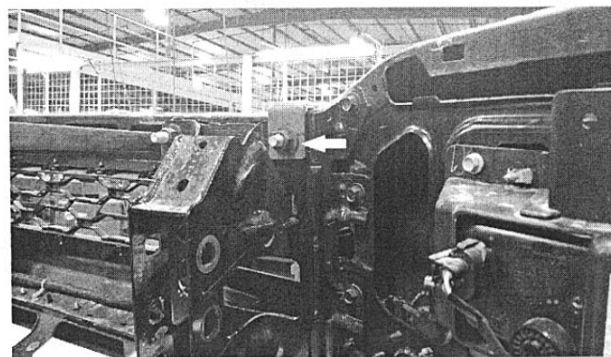
1



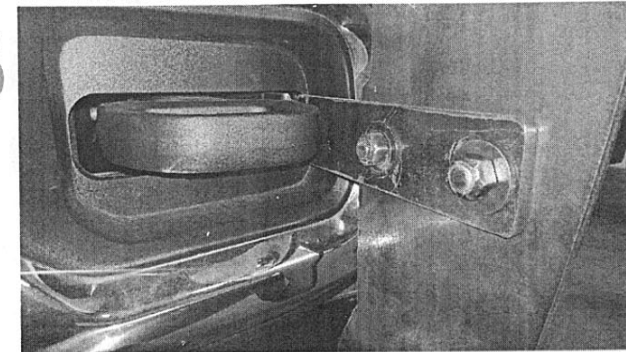
4



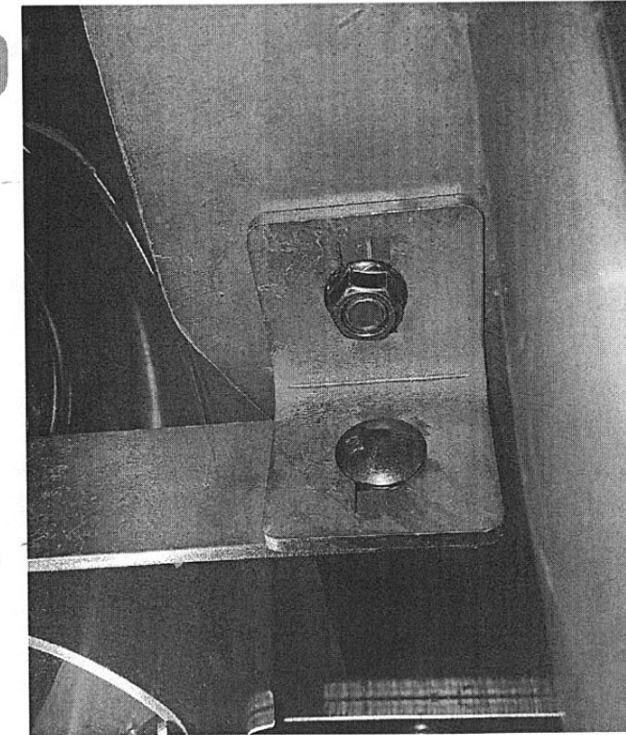
5



6



9



2019 RAM 2500 & 3500

1232 P